



# PARTS LIST



## Models

Mfg. No.	Description
7800461	EMP2265, 22" 6.5GT Self-Propelled Mower (2009)
7800462	EMP22675HW, 22" 6.75GT High Wheel Self-Propelled Mower (2009)

Manual Part No. 7103395

Revision A

Rev. Date: 10/16/2009

Not for  
Reproduction

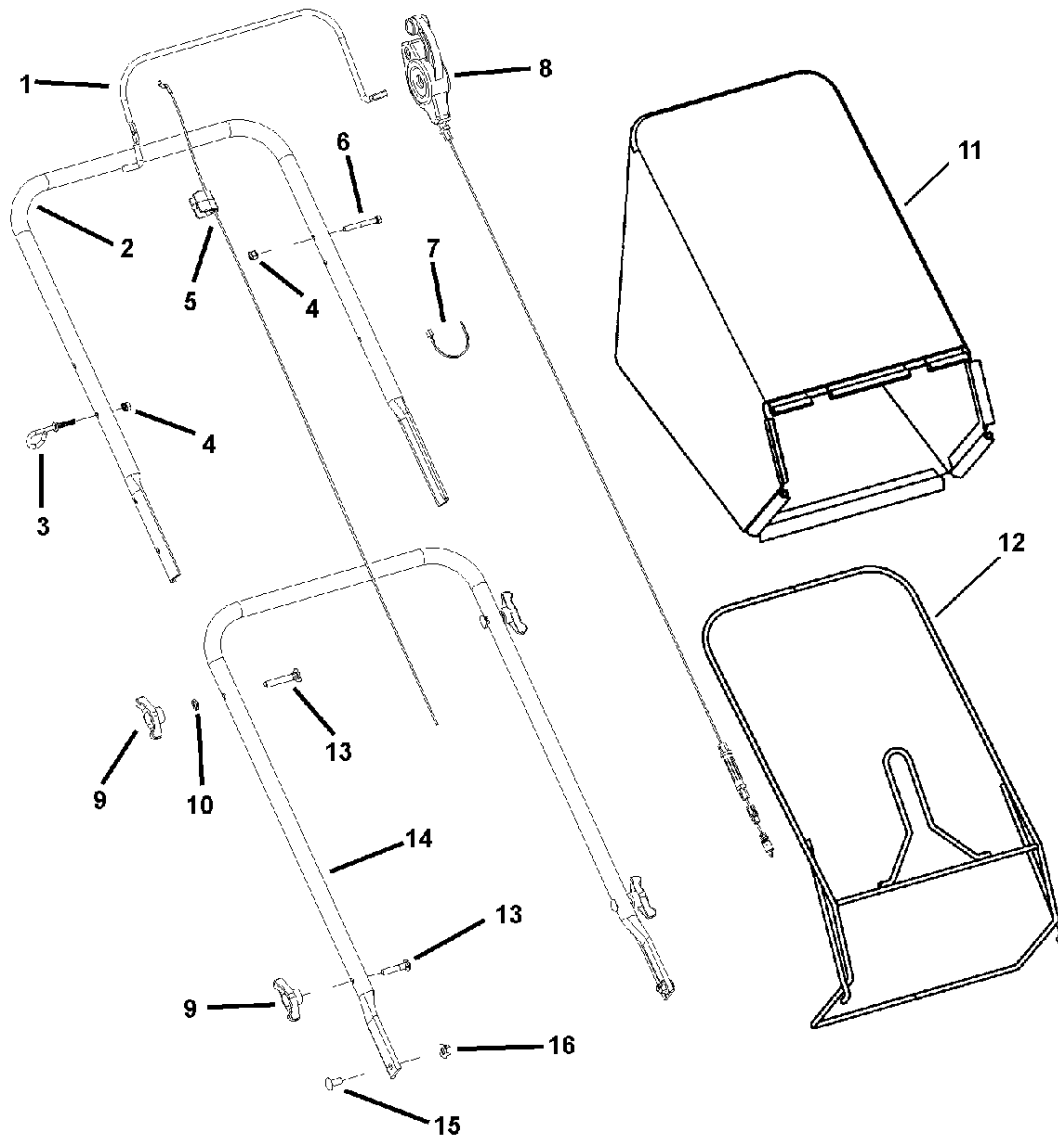
<b>PRODUCT COMPONENTS</b>	<b>PAGES</b>
Handles & Controls - Self-Propelled .....	4
Engine, Blade & Front Cover .....	6
Decals .....	8
Deck Assembly - Standard Wheels .....	10
Deck Assembly - Hi-Wheel .....	12
<b>Torque Specification Chart .....</b>	<b>Inside Back Cover</b>

Not for  
Reproduction

## Handles & Controls - Self-Propelled

6274habg

NOTE: Unless noted otherwise,  
use the standard hardware torque  
specification chart.



The above parts group applies to the following Mfg. Nos.:

7800461 - EMP2265

7800462 - EMP22675HW

## Handles & Controls - Self-Propelled

REF NO	PART NO.	QTY.	DESCRIPTION
1	7101676AMA	1	BAIL, OPC Propelled
2	7300705AMA	1	UPPER HANDLE, Propelled
3	071530MA	1	GUIDE, Rope (1/4-20 thread)
4	7076978SM	2	NUT, 1/4-20 Nyloc
5	7101862YP	1	CABLE, Bail, Std Propelled (53.50" overall length) (Used on Standard Wheel)
5	7101861MA	1	CABLE, Bail, HW Propelled (Used on Hi-Wheel)
6	7090892YP	1	SCREW, 1/4-20 x 2-1/4 Hex Head Cap, GR 5
7	7024649YP	4	WIRE TIE, 11 Inch Std Black Nylon
8	7101858YP	1	CONTROL, Drive, Single Speed (Used on Standard Wheel)
8	1101670MA	1	CONTROL, Drive, Single Speed (Used on Hi-Wheel)
9	071294MA	4	KNOB, Wing, 5/16-18
10	7090391SM	4	WASHER, 5/16" Internal Tooth Lock
11	7102573YP	1	BAG, Cloth, Grass Bag, Murray
12	7101230AYP	1	WELDMENT, Frame, Grass Bag
13	7091189YP	2	BOLT, 5/16-18 x 2" Curved Head Square Neck GR 2
14	7301013AYP	1	HANDLE, Lower
15	1931337SM	2	BOLT, 5/16-18 x 1-1/2" Short Square Neck Carriage GR 5 (Used on Standard Wheel)
15	7091508SM	2	BOLT, 5/16-18 x 3/4 (Used on Hi-Wheel)
16	7090951SM	2	NUT, Hex, 5/16-18

Not for  
Reproduction

### Footnotes

---

The above parts group applies to the following Mfg. Nos.:

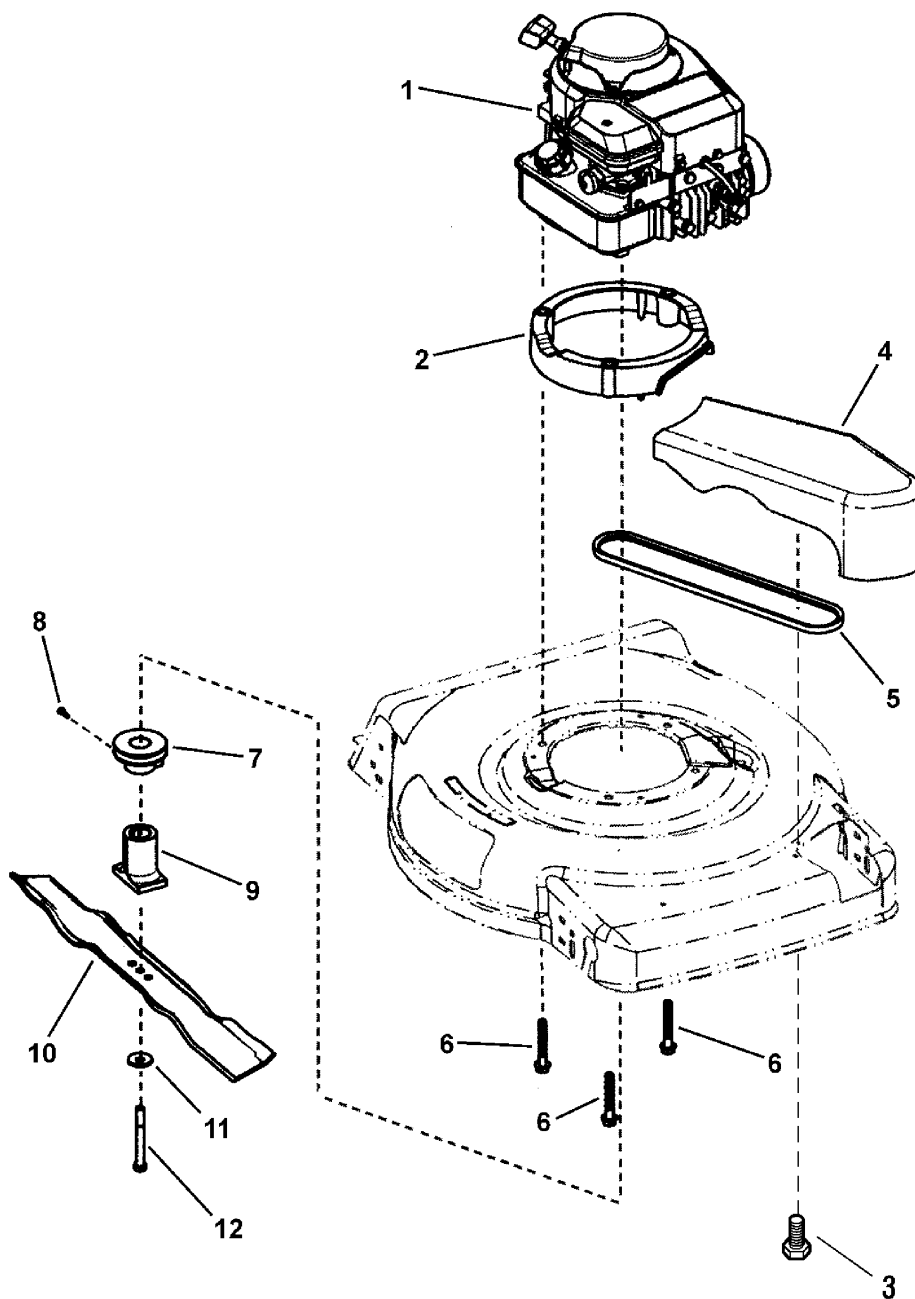
7800461 - EMP2265

7800462 - EMP22675HW

## Engine, Blade & Front Cover

emu\_ebfc

NOTE: Unless noted otherwise,  
use the standard hardware torque  
specification chart.



The above parts group applies to the following Mfg. Nos.:

7800461 - EMP2265

7800462 - EMP22675HW

## Engine, Blade & Front Cover

REF NO	PART NO.	QTY.	DESCRIPTION
1	----	1	* ENGINE, B&S, 650 Ser, X-Spec, B1 Euro (124T02-0188-B1) (Used on Standard Wheel)
1	----	1	* ENGINE, B&S, 6.75GT Mod. 126T02-0268B1 (Used on Hi-Wheel)
2	7101449YP	1	** ASSY, Engine Spacer, 22" WBM, Propelled
3	7900018YP	1	SCREW, Round Washer Hex Head Torx, Hi-Lo
4	1101596MA	1	COVER, Belt
5	7101193MA	1	BELT, Drive 22" WBM, SS (3L sect. 33.75 effective length)
6	025X11MA	3	BOLT, 3/8-16 x 2-1/2" Hex Washer Face
7	7100763MA	1	PULLEY, Engine, 22" Deck, Single Speed
8	26X303MA	1	SCREW, #8-11 x 5/8" Poly
9	7100740YP	1	HUB, Blade, 22" Deck
10	7100851AYP	1	BLADE, 22" Walk Mower
11	1101989MA	1	WASHER, Bellville, .38" ID x 1.183 OD
12	01X144MA	1	BOLT, 3/8-24 x 3-1/4" Hex Head, GR 8

Not for  
Reproduction

### Footnotes

NOTE: \* Purchase engine parts from engine manufacturer dealer.

Note: \*\* Engine Spacer Assembly includes 3 bushings, p/n 7101448.

---

### The above parts group applies to the following Mfg. Nos.:

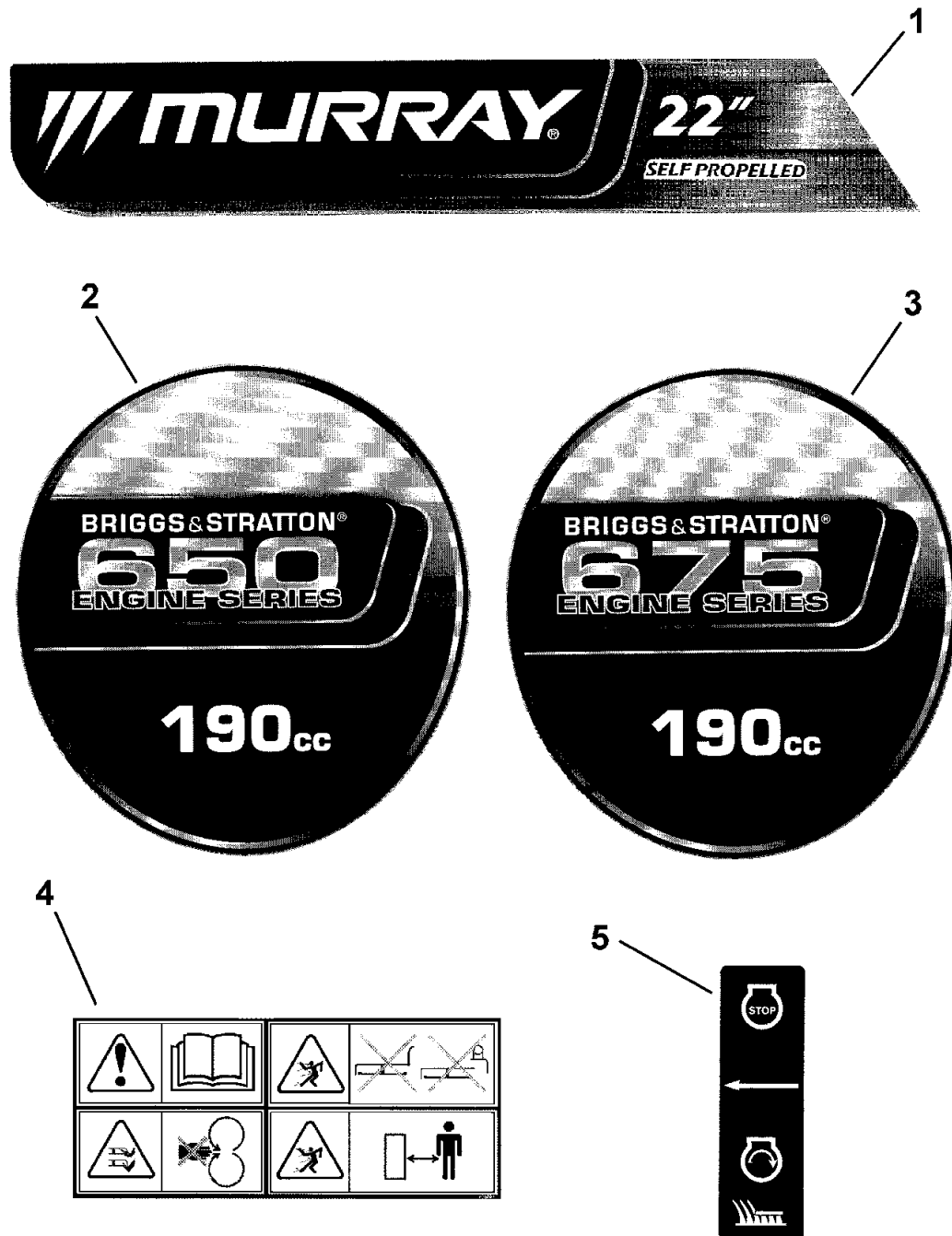
7800461 - EMP2265

7800462 - EMP22675HW

## Decals

emu\_deca

NOTE: Unless noted otherwise,  
use the standard hardware torque  
specification chart.



The above parts group applies to the following Mfg. Nos.:

7800461 - EMP2265  
7800462 - EMP22675HW



## Decals

REF NO	PART NO.	QTY.	DESCRIPTION
1	7101932YP	1	DECAL, Murray Logo, Deck
2	7102168YP	1	DECAL, Engine, TP, 650, Murray, Euro
3	7102169YP	1	DECAL, Engine, TP, 675, Murray, Euro
4	7101084YP	1	DECAL, Warning, Euro, Multi-Panel
5	7029782MA	1	DECAL, OPC Bail International Symbol

Not for  
Reproduction

### Footnotes

(Used on Hi-Wheel)

(Used on Standard Wheel)

---

### The above parts group applies to the following Mfg. Nos.:

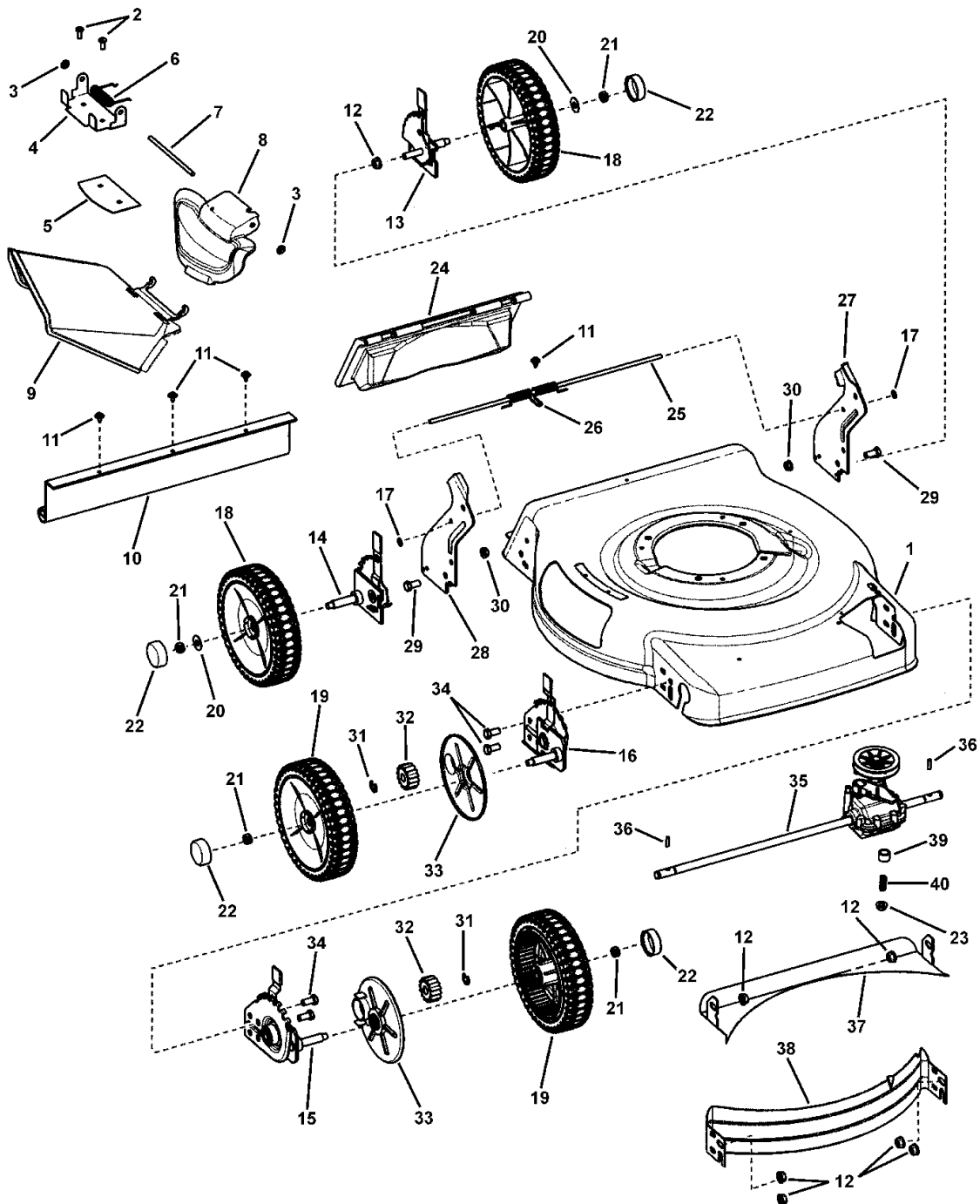
7800461 - EMP2265

7800462 - EMP22675HW

## Deck Assembly - Standard Wheels

emu\_da.sw

NOTE: Unless noted otherwise,  
use the standard hardware torque  
specification chart.



The above parts group applies to the following Mfg. Nos.:  
7800461 - EMP2265

## Deck Assembly - Standard Wheels

REF NO	PART NO.	QTY.	DESCRIPTION
1	7300400BIYP	1	DECK, 22" Walk, 3-N-1
2	26X217MA	3	SCREW, 1/4-20 x 11/16" Pan Head Self-Tap (Torx)
3	7091020YP	4	PUSHNUT, 1/4"
4	7300855BIYP	1	BRACKET, Chute
5	7300856BIYP	1	PLATE, Mulch, 22" RB Scott's
6	166X38MA	1	SPRING, Chute (Torsion)
7	215X19ZMA	1	ROD, Chute Pivot (1/4" Dia. x 5.55")
8	1101098MA	1	COVER, Mulch
9	1101097MA	1	SIDE CHUTE, Plastic, Black
10	1101105MA	1	GUARD, Rear
11	7091286YP	4	SCREW, #10-24 x 1/2" Hex Washer Self-Tap (Sems)
12	7900053MA	8	NUT, 3/8-16 Hex Flange Lock, GR 5
13	7501066YP	1	ASSY, Height-of-Cut, Left Rear, 7 Position
14	7501065YP	1	ASSY, Height-of-Cut, Right Rear, 7 Position
15	7501061YP	1	ASSY, Height-of-Cut, Left Front, 22" WBM, Self-Prop, 7 Position
16	7501062YP	1	ASSY, Height-of-Cut, Right Front, 22" WBM, Self-Prop, 7 Position
17	028X49MA	2	CAP, Retainer
18	7501389YP	2	ASSY, Wheel, 8" x 2" Idle, NB Murray Tread, Gray or 7500541 (Wheel with bearings)
19	7501390YP	2	ASSY, Wheel, 8" x 2" Drive, NB, Murray Tread, Gray or 7500543 (Wheel with bearings)
20	17X169MA	4	WASHER, Flat, 1"
21	7091585SM	4	NUT, Hex Center Lock, 3/8-16
22	7101351MA	4	HUBCAP, Round, Black
23	015X88MA	1	NUT, 5/16-18 Hex Flange Lock
24	7101243YP	1	DOOR, Rear Discharge, 22" Walk Mower
25	7101070YP	1	ROD, Pivot, Rear Door
26	7101461YP	1	SPRING, Torsion, Rear Door, 22" Walk Mower
27	7300669AYP	1	BRACKET, Lower Handle, Right
28	7300668AYP	1	BRACKET, Lower Handle, Left
29	7090606SM	2	BOLT, 5/16-18 x 5/8" Hex Flange Lock, YZ
30	7090585MA	2	NUT, 5/16-18 Flange Lock, YZ
31	7014341YP	4	RING, External Retaining (Waldes 5133-50)
32	7101207YP	2	GEAR, Pinion, 22" WBM, FWD
33	7101402YP	2	SHIELD, Dust, 22" WBM, FWD
34	7091086YP	4	SCREW, 3/8-16 x 3/4" Hex Head Cap, GR 5
35	7101206MA	1	TRANSMISSION, 22" WBM Single Speed, Front Wheel Drive
36	7101270YP	2	DRIVE PIN, 22" WBM, Front Wheel Drive
37	7300854BIYP	1	BAFFLE, Rear, 22" Deck
38	7300440BIYP	1	BAFFLE, Front, 22" WBM
39	7101449YP	1	SPACER, Engine
40	164X27MA	1	SPRING, Compression

### Footnotes

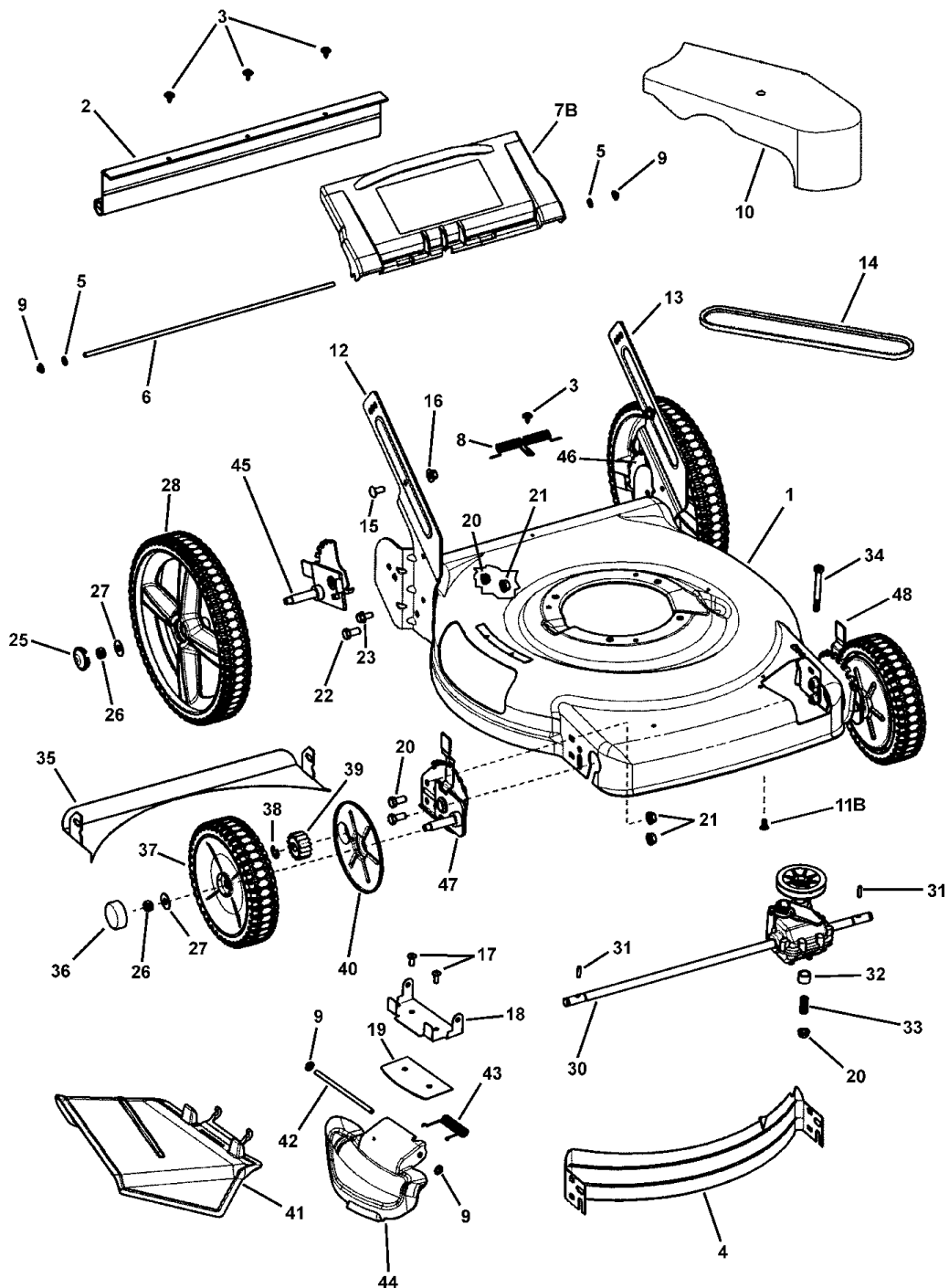
The above parts group applies to the following Mfg. Nos.:

7800461 - EMP2265

## Deck Assembly - Hi-Wheel

NOTE: Unless noted otherwise,  
use the standard hardware torque  
specification chart.

BT22whe



The above parts group applies to the following Mfg. Nos.:

7800462 - EMP22675HW

## Deck Assembly - Hi-Wheel

REF NO	PART NO.	QTY.	DESCRIPTION
1	7300400BIYP	1	DECK, 22 WALK, 3-N-1
2	7102422YP	1	GUARD, Rear, 22 HW (19-1/2 long)
3	7091286YP	4	SCREW, Self Tap, SEMS, 10-24 x 1/2
4	7300440BIYP	1	BAFFLE, Front, 22 WBM
5	7091020YP	2	PUSHNUT
6	7101070YP	1	ROD, Pivot, Rear Door
7B	7101243YP	1	DOOR, Rear Discharge
8	7101461YP	1	SPRING, Torsion, Rear Door
9	7091020YP	4	PUSHNUT, 1/4
10	1101596MA	1	COVER, BELT 22" (shown)
11B	7900018YP	1	SCREW, Round Washer Head Torx, Hi-Lo
12	7300582AYP	1	BRACKET, Lower Handle, Right (not shown detached)
13	7300583AYP	1	BRACKET, Lower Handle, Left (not shown detached)
14	7101193MA	1	BELT, DRIVE 22 (3L Section;33.75 effective length)
15	7091508SM	2	BOLT, Shoulder, 5/16-18 x 3/4
16	7090951SM	2	NUT, Center Lock, 5/16-18
17	7900067YP	3	SCREW, Torx,, 1/4-20 x 11/16
18	7300855BIYP	1	BRACKET, Chute
19	7300856BIYP	1	PLATE, Mulch
20	015X88MA	3	NUT, Hex Flange Lock, 5/16-18
21	7900053MA	8	NUT, Hex Flange,, 3/8-16
22	7090134MA	6	CAPSCREW, Hex Head, 3/8-16 x 3/4
23	7090606SM	2	BOLT, Hex Flange, 5/16-18 x 5/8
25	7101931MA	2	HUBCAP, 12 Wheel
26	7091585SM	4	NUT, Centerlock, 3/8-16
27	17X169MA	4	WASHER, Flat, 1
28	7501399YP	2	WHEEL, 12 x 2, Idle
30	7101206MA	1	TRANSMISSION, 22 WBM SS, FWD
31	7101270YP	2	PIN, Drive, 22 WBM, FWD
32	7102671YP	1	SPACER, Transmission
33	164X27MA	1	SPRING, Compression
34	01X156MA	1	BOLT, Hex-Head 5/16-18 x 3
35	7300854BIYP	1	BAFFLE, Rear
36	7101351MA	2	HUBCAP
37	7501390YP	2	WHEEL, 8 x 2, Drive
38	7014341YP	4	RETAINING RING
39	7101207YP	2	GEAR, Pinion
40	7101402YP	2	SHIELD, Dust
41	1101097MA	1	CHUTE, Side
42	215X19ZMA	1	ROD, Pivot, Chute
43	166X38MA	1	SPRING, Torsion, Chute
44	1101098MA	1	COVER, Mulch

### Footnotes

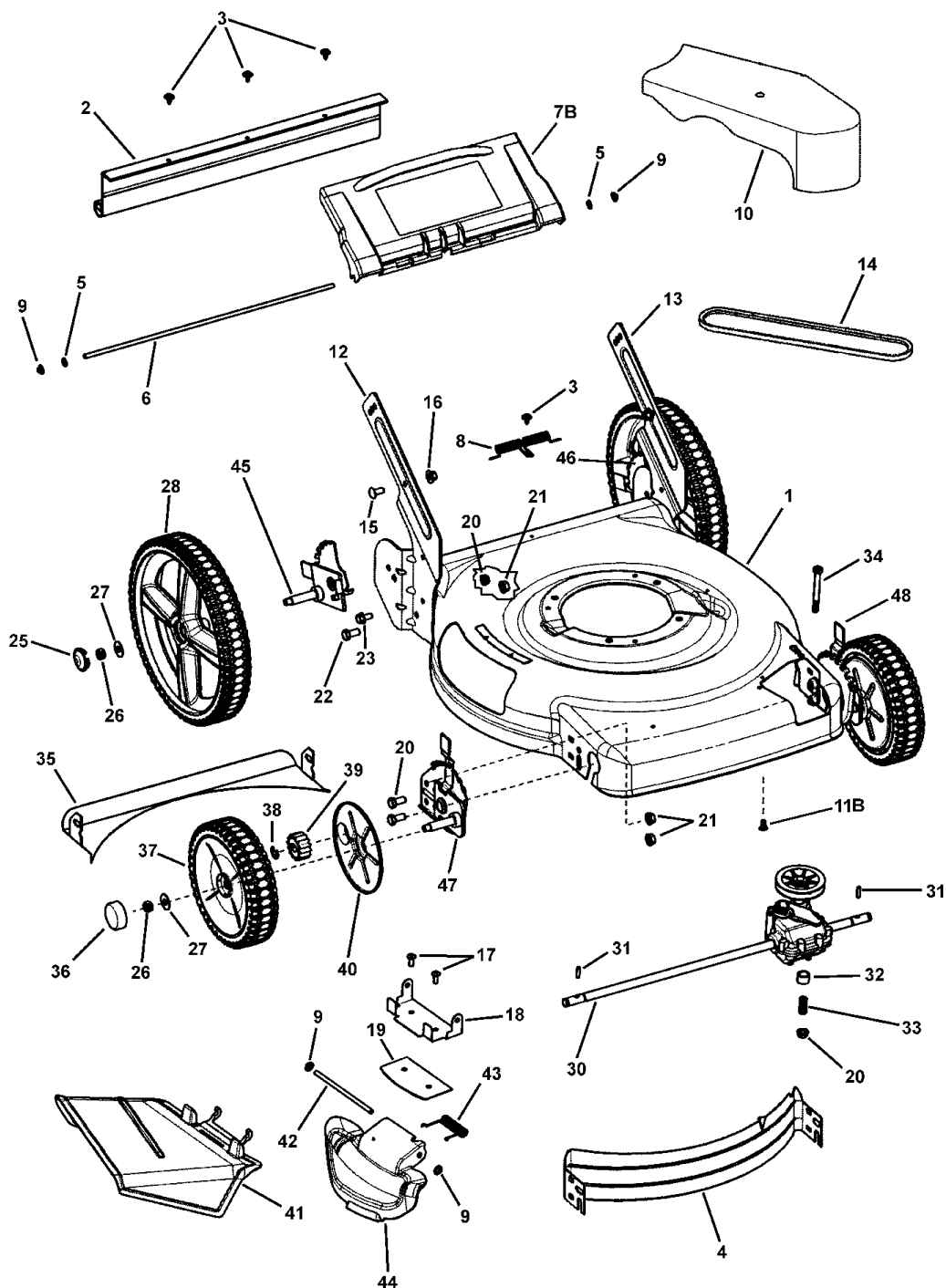
The above parts group applies to the following Mfg. Nos.:

7800462 - EMP22675HW

# Deck Assembly - Hi-Wheel

NOTE: Unless noted otherwise, use the standard hardware torque specification chart.

BT22whe



The above parts group applies to the following Mfg. Nos.:  
7800462 - EMP22675HW

## **Deck Assembly - Hi-Wheel**

<b>REF NO</b>	<b>PART NO.</b>	<b>QTY.</b>	<b>DESCRIPTION</b>
45	7501065YP	1	ASSEMBLY, Height-Of-Cut, 22", 7 Position, Right Rear (Shown Detached)
46	7501066YP	1	ASSEMBLY, Height-Of-Cut, 22", 7 Position, Left Rear (Shown Attached)
47	7501062YP	1	ASSEMBLY, Height-Of-Cut, 22", Propelled, 7 Position, Right Front (Shown Detached)
48	7501061YP	1	ASSEMBLY, Height-Of-Cut, 22", Propelled, 7 Position, Left Front (Shown Attached)

Not for  
Reproduction

### **Footnotes**

---

**The above parts group applies to the following Mfg. Nos.:**

7800462 - EMP22675HW

Not for  
Reproduction

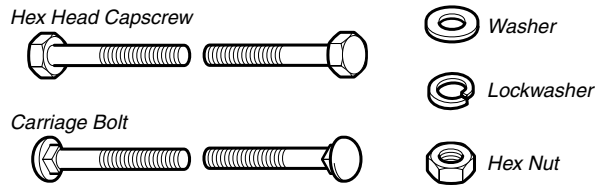


Not for  
Reproduction

Not for  
Reproduction

# Hardware Identification & Torque Specifications

## Common Hardware Types

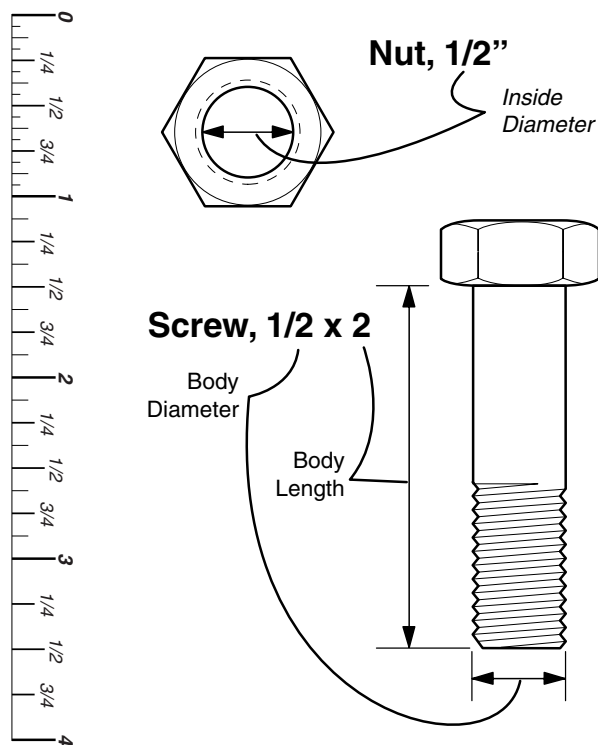


## Standard Hardware Sizing

When a washer or nut is identified as 1/2", this is the *Nominal size*, meaning the *inside diameter* is 1/2 inch; if a second number is present it represents the *threads per inch*

When bolt or capscrew is identified as 1/2 - 16 x 2", this means the *Nominal size*, or *body diameter* is 1/2 inch; the second number represents the *threads per inch* (16 in this example, and the final number is the *body length* of the bolt or screw (in this example 2 inches long).

**The guides and ruler furnished below are designed to help you select the appropriate hardware and tools.**



## Torque Specification Chart

FOR STANDARD MACHINE HARDWARE (Tolerance  $\pm 20\%$ )

Hardware Grade	No Marks SAE Grade 2		SAE Grade 5		SAE Grade 8	
	in/lbs ft/lbs	Nm.	in/lbs ft/lbs	Nm.	in/lbs ft/lbs	Nm.
8-32	19	2.1	30	3.4	41	4.6
8-36	20	2.3	31	3.5	43	4.9
10-24	27	3.1	43	4.9	60	6.8
10-32	31	3.5	49	5.5	68	7.7
1/4-20	66	7.6	8	10.9	12	16.3
1/4-28	76	8.6	10	13.6	14	19.0
5/16-18	11	15.0	17	23.1	25	34.0
5/16-24	12	16.3	19	25.8	27	34.0
3/8-16	20	27.2	30	40.8	45	61.2
3/8-24	23	31.3	35	47.6	50	68.0
7/16-14	30	40.8	50	68.0	70	95.2
7/16-20	35	47.6	55	74.8	80	108.8
1/2-13	50	68.0	75	102.0	110	149.6
1/2-20	55	74.8	90	122.4	120	163.2
9/16-12	65	88.4	110	149.6	150	204.0
9/16-18	75	102.0	120	163.2	170	231.2
5/8-11	90	122.4	150	204.0	220	299.2
5/8-18	100	136	180	244.8	240	326.4
3/4-10	160	217.6	260	353.6	386	525.0
3/4-16	180	244.8	300	408.0	420	571.2
7/8-9	140	190.4	400	544.0	600	816.0
7/8-14	155	210.8	440	598.4	660	897.6
1-8	220	299.2	580	788.8	900	1,244.0
1-12	240	326.4	640	870.4	1,000	1,360.0

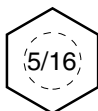
### NOTES

- These torque values are to be used for all hardware excluding: locknuts, self-tapping screws, thread forming screws, sheet metal screws and socket head setscrews.
- Recommended seating torque values for locknuts:
  - for prevailing torque locknuts - use 65% of grade 5 torques.
  - for flange whizlock nuts and screws - use 135% of grade 5 torques.
- Unless otherwise noted on assembly drawings, all torque values must meet this specification.

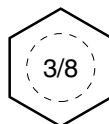
## Wrench & Fastener Size Guide



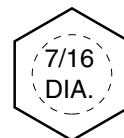
1/4" Bolt or Nut  
Wrench—7/16"



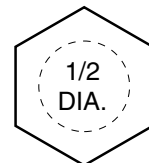
5/16" Bolt or Nut  
Wrench—1/2"



3/8" Bolt or Nut  
Wrench—9/16"



7/16" Bolt or Nut  
Wrench (Bolt)—5/8"  
Wrench (Nut)—11/16"



1/2" Bolt or Nut  
Wrench—3/4"

Not for  
Reproduction